

# PERFORMANCE HIGHLIGHTS

## Financials

	2019	2018
<b>Revenue</b>	<b>HK\$10,739</b> million	HK\$11,612 million
<b>Distributable Income</b>	<b>HK\$2,830</b> million	HK\$3,538 million
<b>Total Distribution per SSU</b>	<b>HK 32.03</b> cents	HK 40.04 cents
Interim Distribution per SSU	<b>HK 15.94</b> cents	HK 19.92 cents
Final Distribution per SSU	<b>HK 16.09</b> cents	HK 20.12 cents
<b>Total Assets</b>	<b>HK\$109,717</b> million	HK\$107,894 million
<b>Net Debt-to-Net Total Capital Ratio</b>	<b>47%</b>	46%
<b>S&amp;P Credit Rating</b>	<b>A-/ Stable</b>	A-/ Stable
HK Electric		
HK Electric Investments Limited	<b>A-/ Stable</b>	A-/ Stable

# Operations

58

Number of Renewable Energy Installations  
Joining Feed-in Tariff Scheme

3,237<sub>MW</sub>  
Generation Capacity



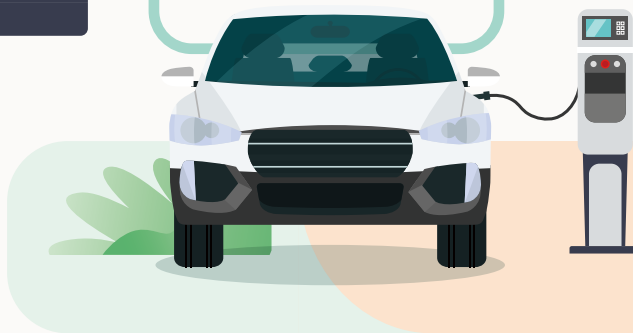
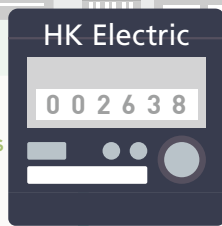
581,000

Number of Customers

>99.999%  
Supply Reliability



10,519 millions  
of kWh  
Units Sold



6,536 km  
Network Length

12,314  
Number of Free Charging  
Operations Provided