

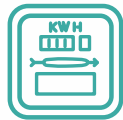
PERFORMANCE HIGHLIGHTS

Financials

	2018	2017
Revenue	HK\$11,612 million	HK\$11,693 million
Distributable Income	HK\$3,538 million	HK\$3,538 million
Total Distribution per SSU	HK 40.04 cents	HK 40.04 cents
Interim Distribution per SSU	HK 19.92 cents	HK 19.92 cents
Final Distribution per SSU	HK 20.12 cents	HK 20.12 cents
Total Assets	HK\$107,894 million	HK\$109,319 million
Net Debt-to-Net Total Capital Ratio	46%	44%
S&P Credit Rating		
HK Electric	A-/ Stable	A-/ Stable
HK Electric Investments Limited	A-/ Stable	A-/ Stable



Operations



Units Sold
10,537 millions of kWh



Supply Reliability
> 99.999 %



Generation Capacity
3,237 MW



Number of Customers
579,000



Network Length
6,457 km

