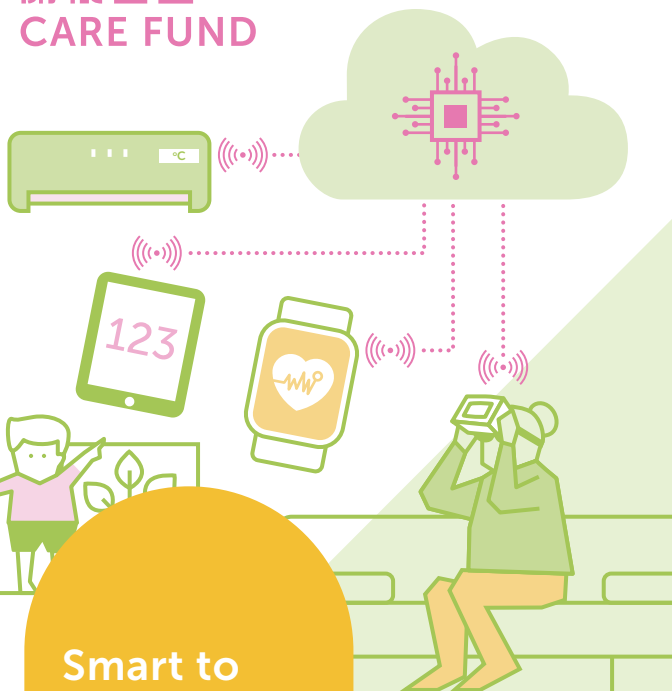


關懷基金 CARE FUND



Smart to Care Subsidy

brings a smart living
environment to the needy



HK Electric provides full subsidies capped at HK\$300,000 for implementation of gerontechnology or smart technology projects at eligible premises in HK Electric's supply territory, which provide an energy-efficient, safe, comfortable and/or convenient environment for the premises users.





Eligible Premises

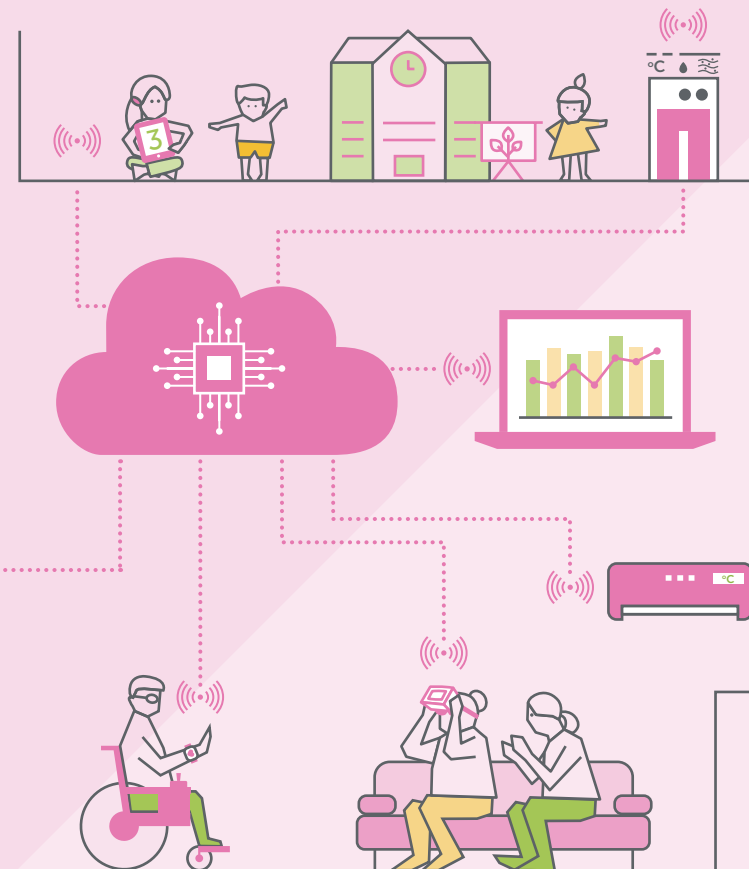
- Premises operated for provision of caring, rehabilitation or residential services to elderly, children or disabilities.
- Transitional housing operated by non-profit-making NGOs.

Eligible Projects

Turnkey implementation of gerontechnology or smart technology equipment/systems at the eligible premises listed above.

Procedures

- 1  Submit application form and the required documents.
- 2  HK Electric to vet application and carry out pre-project inspection.
- 3  Award contract upon HK Electric's approval and complete installation.
- 4  HK Electric to disburse the subsidy after satisfactory post-installation inspection.



Enquiry

 2510 2701

 SPCF@hkelectric.com

 www.hkelectric.com/SPCF-en

