

智惜用電
smart
power

關懷基金
CARE FUND



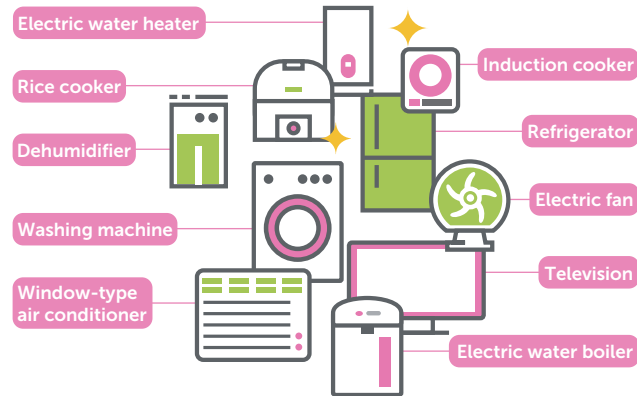
Smart Power for Smart City

Committed to caring for the community, HK Electric has set up Smart Power Care Fund to subsidise the needy and disadvantaged households to save energy and improve electrical safety.



Energy-efficient Appliances Subsidy

Eligible households living in HK Electric's supply territory may apply for a one-off subsidy up to HK\$5,000 for:

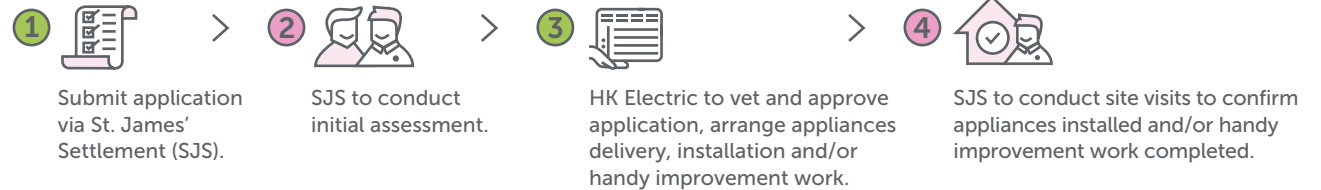


- Replacement of existing household electrical appliances by more energy-efficient models
- Provision of new energy-efficient household electrical appliances
- Provision of handy improvement works for safe use of electricity

Eligibility

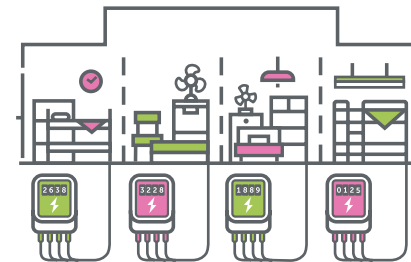
- Beneficiaries of the HKSAR Government's Comprehensive Social Security Assistance (CSSA) Scheme; or
- Customers participating in HK Electric's Concessionary Tariff Schemes; or
- Eligible households of sub-divided units (SDUs)*; or
- The household resides at transitional housing.

Procedures



SDU Rewiring Subsidy

Eligible SDU households* living in HK Electric's supply territory may apply for a one-off subsidy for rewiring and installation of individual HK Electric's tariff meters capped at HK\$15,000 per SDU (subject to an overall cap of HK\$45,000 for the flat before subdivision). The applicant shall obtain prior consent of every SDU households in the flat, the owner of the flat and Building Owners' Corporations.



SDU Electricity Charges Relief

Eligible SDU households* without individual HK Electric's tariff meters may apply for a subsidy of HK\$1,000 per household per year.

* A member of the household residing in the same SDU is a beneficiary of CSSA, Old Age Living Allowance (OALA), Working Family Allowance (WFA) or School Textbook Assistance (TA) Scheme.

^ The applicant is a Senior Citizen Card holder or the household is facing financial difficulties as recommended by the assessment centre. Please refer to HK Electric's website for the list of assessment centres.

The abovesaid Programmes are bound by the Terms & Conditions. For details, please refer to the Application Form / Guide to Application of each Programme.

Enquiry

☎ 2510 2701

✉ SPCF@hkelectric.com

🌐 www.hkelectric.com/SPCF-en

