

Welcome

to our “e-REW Express”. During our Renewable Energy Power System (REPS) installation inspections, we have found that some installation requirements are sometimes overlooked by the Registered Electrical Contractor/Worker (REC/REW). In this issue, we will highlight some of these common departures so that you could avoid them next time when you prepare your REPS installation for connection of supply.

Common Departures on Renewable Energy Power System (REPS) Installation Requirements

1. Solar Photovoltaic System or Wind Turbine at Roof

1.1 Protective Device Not Provided

Protective device for REPS installation at roof should be installed to interrupt all live conductors.

1.2 Metal Rack for Mounting REPS Not Earthed

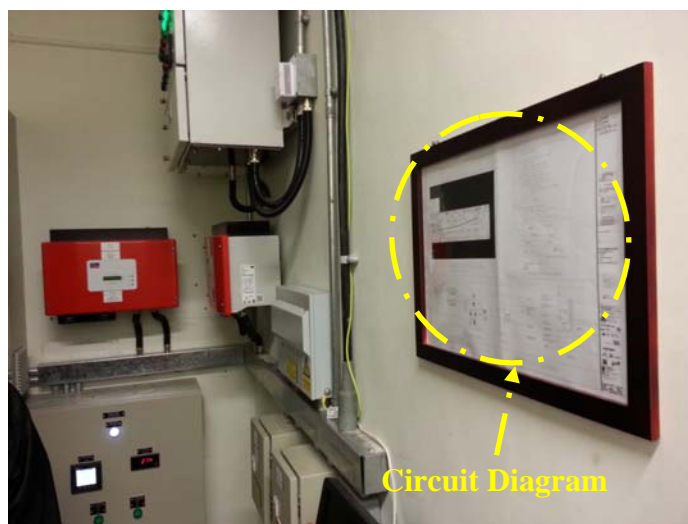
Protective conductor should be provided at metal rack and bonded to earth.



2. At Inverter

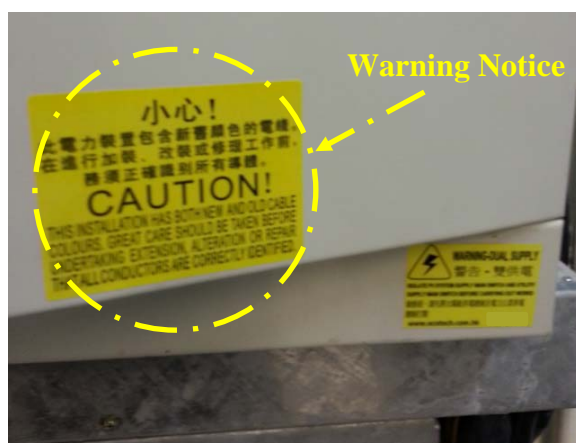
2.1 Circuit Diagram Not Provided

A circuit diagram should be updated regularly and displayed at appropriate locations to facilitate maintenance personnel to properly shutdown the grid connection arrangement under normal and emergency operations.



2.2 Warning Notice for New Cable Colour Code Not Provided

Where cables in new colour code are installed in an existing installation with old colour coded cables, a yellow warning notice in both English and Chinese should be displayed at or close to the nearest upstream distribution board.



2.3 Warning Label for Dual Power Supply Sources Not Provided

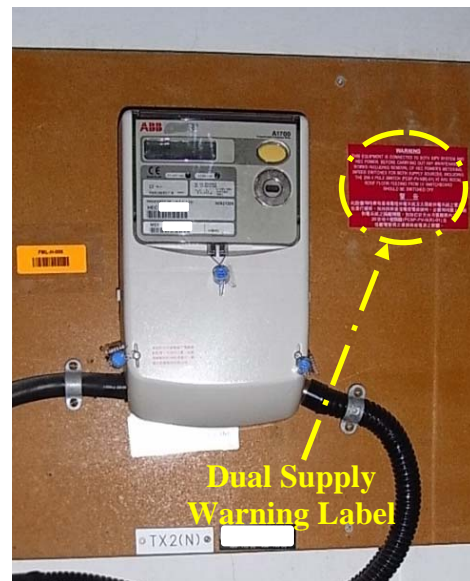
Warning label (Dual Supply) should be displayed at the electrical equipment with dual power supply sources so as to alert the maintenance personnel.



3. At Main Switchroom

3.1 Warning Label for Dual Power Supply Sources Not Provided

Warning label (Dual Supply) should be displayed at the customer main switch before HK Electric meter and meter board.



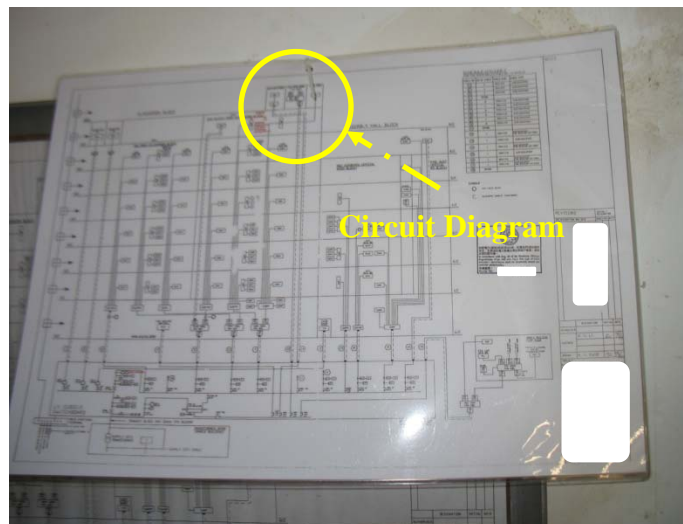
3.2 Label for Direct Communication with HK Electric Not Provided

To ensure the safe operation of the REPS and grid, the owner should provide a label for direct communication with HK Electric and designate a suitably qualified person to communicate directly with HK Electric under normal and emergency operations.



3.3 As Fitted Wiring Diagram Showing Main Distribution System Not Provided

Circuit diagrams should be updated regularly and displayed at appropriate locations to facilitate maintenance personnel to properly shut down the grid connection arrangement under normal and emergency operations.



We hope you find the information useful and handy. If you have any suggestion, please send an email to us at mail@hkelectric.com or contact our Customer Installation Section at 2887 3455 so that we can further improve our service.