

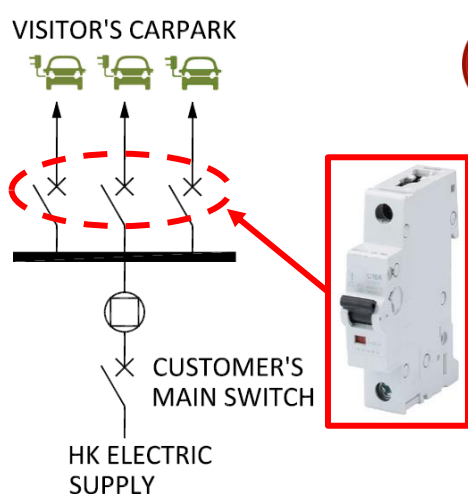
Welcome

to our “e-REW Express”. During our installation inspections, we have found that some requirements for Electric Vehicle (EV) Charging Facilities are sometimes overlooked. In this issue, we will highlight some of those common departures so that you can avoid them next time when you prepare your installation for connection of supply.

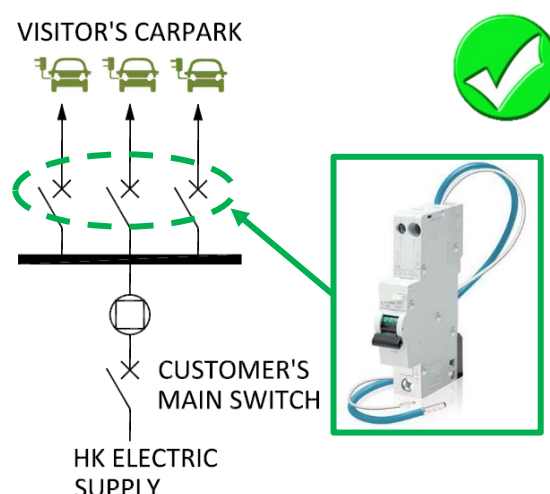
We hope you will find the information of this e-REW Express useful. If you have any suggestion, please send an email to us at mail@hkelectric.com or contact our Customer Installation Department on 2887 3455 so that we can further improve our service.

Common Departures on Electric Vehicle (EV) Charging Facilities

1. Earth Leakage Protective Device

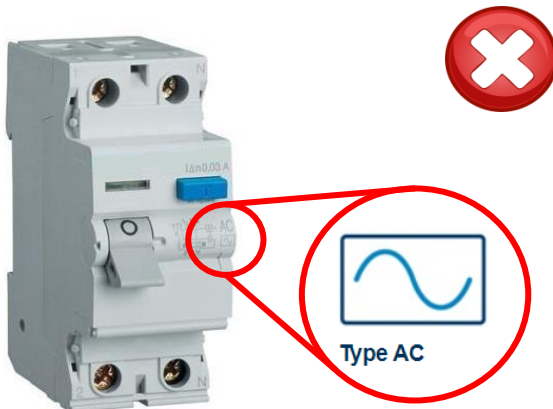


Final circuit protective devices without earth leakage protection are not allowed.

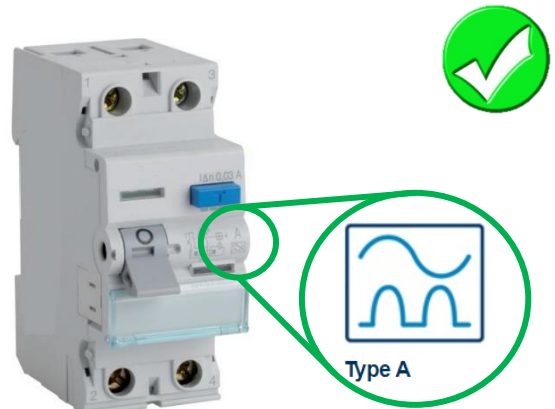


Earth leakage protective device of residual operating current not exceeding 30 mA shall be provided for each final circuit.

2. Type of Residual Current Device



Residual current device (RCD) of inappropriate type is not allowed.



Residual current device (RCD) with characteristics of type A shall be provided.

3. Notice of Testing for Residual Current Device

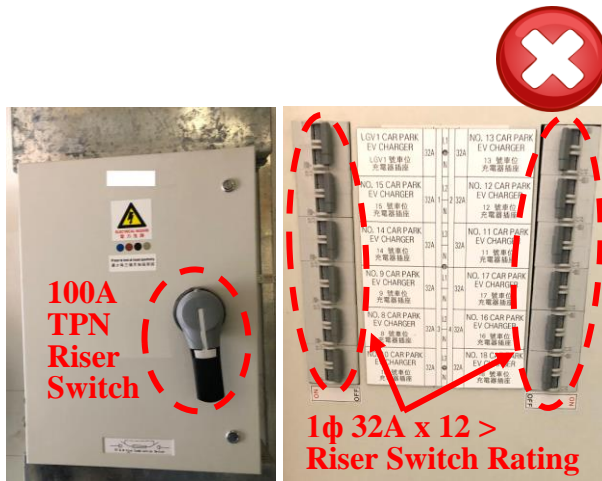


Notice of testing is not provided at or near a residual current device.

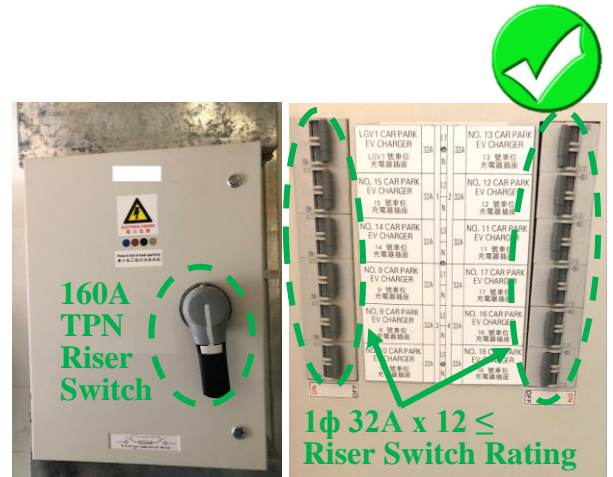


“Press to test at least quarterly” and “最少每三個月按鈕測試” notice should be provided at or near a residual current device.

4. Diversity Factor

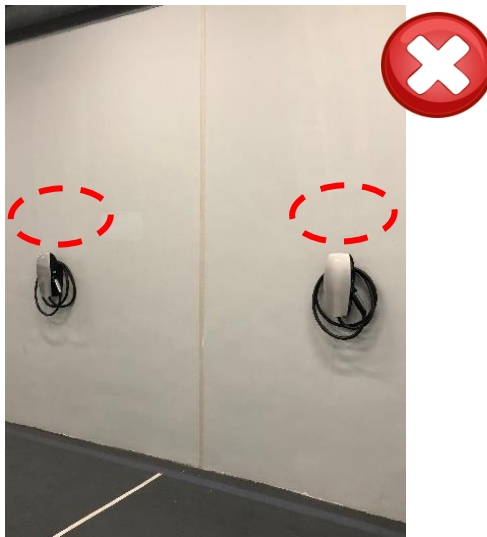


Diversity is applied to a dedicated distribution circuit supplying multi-electric vehicles.



Diversity shall not be allowed for a dedicated distribution circuit supplying multi-electric vehicles, except when load control is available.

5. Provision of Local Switch



A current breaking device is not provided at the upstream of the socket outlet at the charging facility.

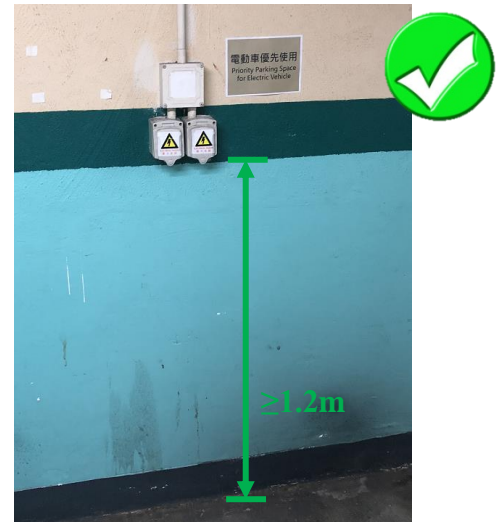


A current breaking device (an ON/OFF switch) shall be provided at the upstream of the socket outlet at the charging facility for switching on after plugging and switching off before unplugging the charging cable assembly.

6. Installation Height



EV supply equipment or socket outlet shall not be installed at height less than 1.2m above finished floor level.



EV supply equipment or socket outlet shall be installed at a height of about 1.2m above finished floor level for easy access.

7. Ingress Protection



EV supply equipment and socket outlet and associated electrical equipment without suitable Ingress Protection are not allowed.



EV supply equipment and socket outlet and associated electrical equipment shall be with an index of protection of IPX3 for use at indoor car park. An index of protection of IPX4 or higher is required for both plugged and no-plug conditions if the EV charging facility is installed and used in an outdoor environment.

We are pleased to provide our advisory service to Registered Electrical Contractor/Registered Electrical Worker (REC/REW) regarding the requirements of Electric Vehicle (EV) Charging Facilities. If you require any further assistance and information, you may call our EV hotline at telephone number 2510 2701 or via the dedicated email address ev@hkelectric.com.